



## **Pynham Meadow Development Update**

As you will know we have had a very wet winter season and this has impacted on the meadow.

1. The ditch we had to create is working – it has filled up nicely and provides extra run-off capacity for the local area.
2. We have a drainage issue on the north-east corner of the open space. The whole of Pynham Meadow has always had standing water during wet weather. This is very common in this area due to the clay subsoil. We will look to see if any mitigation can be created to reduce this in the future.
3. More work is needed on the pathways which do get wet and boggy.

During January the Miyawaki Forest has been created and planted – over 1,100 plants in the ground. The area is fenced off to protect the plants during the early growth times. You can read up here all about [Miyawaki Forests](#) and the principles of effective foresting. This project has been enabled by funding from DEFRA and promoted by Chichester District Council.

The Community Orchard area has also been planted with 28 assorted trees, and a further 5 flowering trees at the southern side of the meadow. As I write this, workers are on-site installing protective cages to protect these trees during their early years.

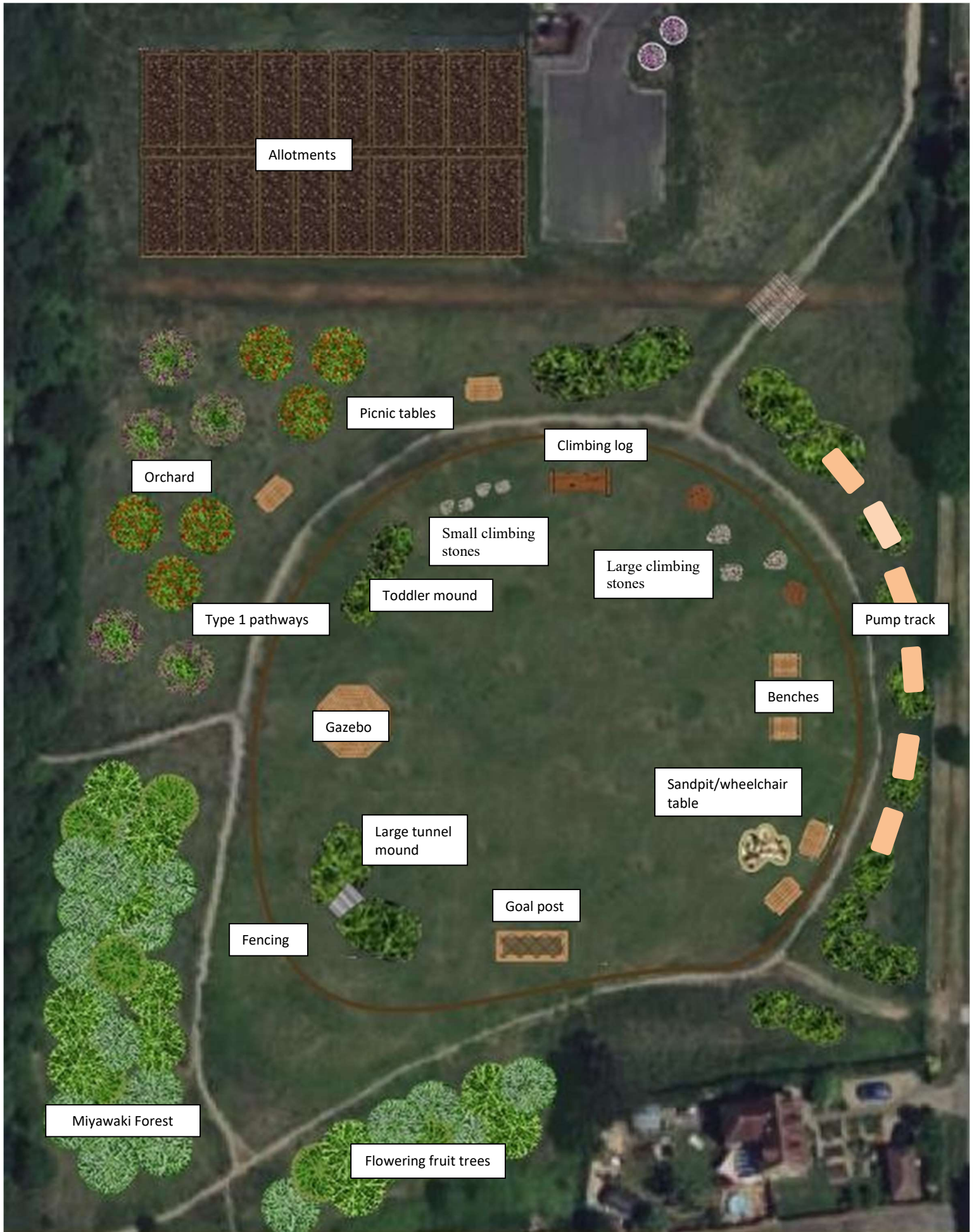
The allotments are due to be ploughed and harrowed and marked out into individual areas ready for handover to allotment holders around the end of March. There are still allotments available so if you are interested, please contact our Parish Clerk Bambi Jones on [clerk@chidhamandhambrook-pc.gov.uk](mailto:clerk@chidhamandhambrook-pc.gov.uk).

In Spring when the ground has dried up, work will start to install recreational features including a sandpit, a football goal, a pavilion, a mountain bike track (called a pump track), various rocks and tree trunks for climbing. Please see the working layout below.

Finally, users of the play area off Broad Road will see we have installed a mini library. This was an initiative from one of our residents, Maddie Hickman, who spent some time last year as a Parish Councillor. Please feel free to take books away and replace them with your unwanted books.

As ever, if you have any suggestions or request do contact me at [p.bolton@chidhamandhambrook-pc.gov.uk](mailto:p.bolton@chidhamandhambrook-pc.gov.uk)

Peter Bolton  
Chair – Public Open Spaces Committee  
March 2023



Allotments

Orchard

Picnic tables

Climbing log

Small climbing stones

Large climbing stones

Toddler mound

Type 1 pathways

Pump track

Benches

Gazebo

Sandpit/wheelchair table

Large tunnel mound

Goal post

Fencing

Miyawaki Forest

Flowering fruit trees