

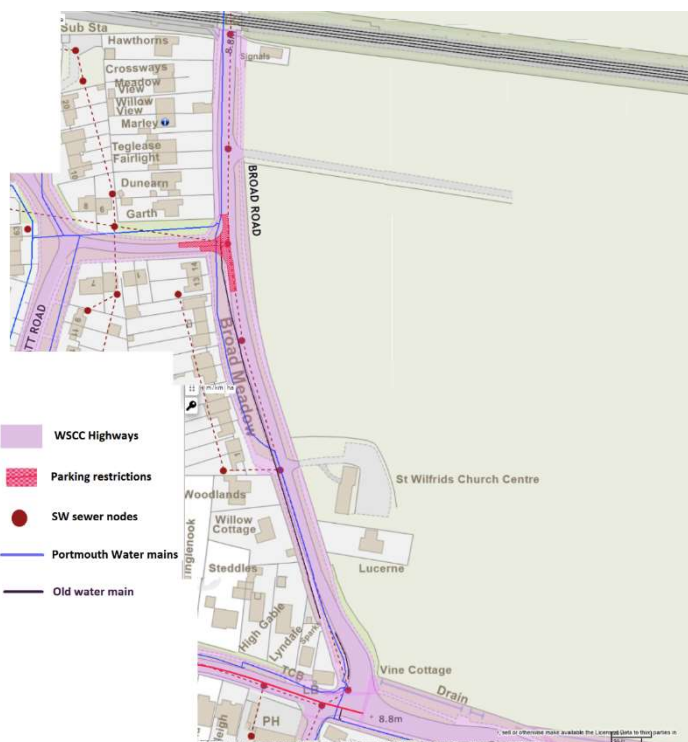
Bourne Parishes – WSCC Councillor report

Chidham and Hambrook Parish – June 2023

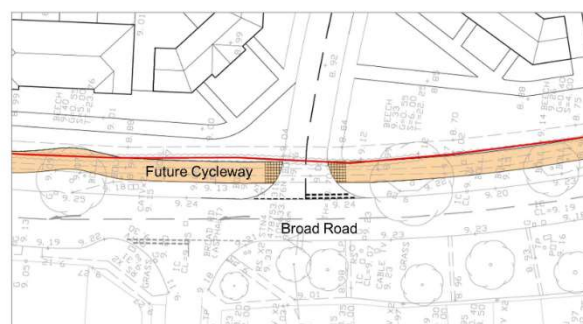
Parish	Issue	Type	Priority	Requested	Actioned
Chidham & Hambrook	Chidham school Community Highways Scheme	Highways	1	Nov-21	In progress
Chidham & Hambrook	Speed reductions and traffic calming - WSCC TFG	Highways	2	Sep-22	In progress
Chidham & Hambrook	ChEmRoute improvements & speed reductions	Highways	2	Nov-21	In progress
Chidham & Hambrook	Introduce Gigabit Broadband	Technology	2	Nov-21	With Parish
Chidham & Hambrook	Year 2 fund for free travel Bourne Community Bus	Transport	3	Nov-21	Launch June 2022
Chidham & Hambrook	Bourne Heritage Trail - 12 web pages and signs	Leisure	3	Jan-23	In progress
Chidham & Hambrook	Broad road traffic calming measures CHS	Transport	2	Feb-23	In progress
Chidham & Hambrook	Cycle path from Cala homes to Chidham school	Transport	3	Feb-21	Cancelled

Pallant Homes Appeal

There was a robust response from over 20 residents and Parish, District and County Councillors on day one of the public speaking section of the Inspector Appeal on 15th May for 200 homes on two sites by Pallant Homes. What came across particularly strongly were concerns about transport overload, lack of infrastructure, damage to the environment, wildlife and iconic views of the South Downs and the lack of sewage treatment capacity and storm overflows into Chichester Harbour. This was followed in the afternoon by a review of Highways concerns where the Parish and Councillors raised questions of Brightplan who had done the highways survey on behalf of Pallant. The session on Monday 5th June is when sewage capacity will be discussed in a round table session, one of the critical aspects of this appeal. I will be attending along with the Parish to make points or raise questions if allowed. The Inspector has committed to visit both sites again before the appeal finishes on 16th June. Decision date unknown.



Improvements proposed within WSP's feasibility study (see Section 4.2). The access design is shown in Figure 3.1.



The proposed geometries would accommodate concurrent car movements, as well as access by large emergency vehicles and service vehicles in all turning directions.

The utilities on the West side of Broad Road will likely prevent parking bays being created on Broad Meadow (sewage pipes and water mains)

Land on North side at Flatt Road entrance is not owned or managed by WSCC so vehicle parking could not be created there either.

Cooks Lane Southbourne

This site for 200 homes was won on Inspector Appeal in August 2022 and is currently in the early stages of site preparation. Bloor Homes do appear to be willing to meet to discuss resident concerns over site access and timing on any construction traffic likely to arrive from Summer 2023, for a construction period of around two years. The main route in and out of the site is via Stein Road off the A259 roundabout, over the Southbourne level crossing and down Cooks Lane. Southbourne, Westbourne and Chidham Parishes are keen to ensure suitable signs and enforcement to ensure that construction traffic is prevented from using Inlands Road or Prior Leaze Lane to the East or Old Farm Lane to the North. A meeting is due to be held in the next week with Parishes, Bloor Homes and WSCC Highways.

Reducing Parish flooding

Could you please let me know your one Parish nominee for the new Bourne Flood Prevention (BFP) group?

This will likely require just two online meetings of around 40 minutes to sort out your two Parish drainage and flooding fix priorities via Operation Watershed.

Last year we had 52% of 2022 annual rainfall in 3 months from October to December, with up to 70mm rain per day causing multiple issues on roads and near houses. Many Bourne areas were under water with the B2146 and River Street Westbourne both flooded for two weeks, plus A259 flooding issues in Southbourne opposite the farm shop.

For this reason I suggest we form a small Bourne Flood Prevention (BFP) group looking at multiple flooding issues including road flooding, road drainage, field runoff, river flooding, culvert flooding and emergency drainage. This group would meet online.

This group aim to seek long term drainage solutions in Parish problem flood areas, with 2 sites per Parish as a start:

- River Street – Westbourne
- North Street - Westbourne
- Stein Road roundabout - Southbourne
- Farm shop area - Southbourne
- Junction of Broad road / Scant Road / Priors Leaze Lane – Hambrook
- B2146 Victoria Inn junction
- B2146 Watergate 'dip' etc

Bourne Flood Prevention Group:

1. All Bourne Parishes have one member representing them
2. Define max two 'problem' flood locations per Parish
3. Focus: road / resident safety plus climate change impact

Changes in WSCC leaders and committees

May sees a change in the various committees that WSCC Councillors are on and their party leaders too. Paul Marshall remains leader of the Conservative group (46 Members), Kirsty Lord the leader of the Lib Dems (11), Donna Johnson leader of the Green and Independent Alliance (4) and Labour leader changes to Chris Oxlade (9).

I have changed onto the Communities, Highways and Environment Special Committee (CHESC) from Performance and Finance. This will hopefully help get better focus and solutions for the many road relaying, pothole and signage issues in the Parish, as well as raising the issue further of degrading white lines on West Sussex roads. I continue on the Road Safety Task and Finish Group and also am now on the Public Rights of Way Committee, plus a new Careers and Skills Executive Committee looking at how to improve recruitment and motivation of staff at all levels in WSCC, as it has had issues retaining staff in adult and children's services, social care and highways in particular.

Economic development

The final stage of the ERDF funded 'Hothouse' program run by the Universities of Chichester and Brighton finished in April, supporting 700 businesses and 200 start-ups during its three year period of operation. The combination of £11m in grant funding and one to one business support saw an economic gain of £114m, a ten to one benefit ratio.

Due to Brexit this program cannot be repeated in its current form. The Government has also announced that Local Enterprise Partnerships (LEPs), that have provided support to SMEs since the demise of Business Links, will also cease to exist from end March 2024. The role of Coast2Capital locally will be taken up by WSCC with a revised program of business support currently being defined, and existing C2C staff may be able to be re-employed by WSCC in key roles.

Bourne road speed reduction Community Highways Scheme – Broad Road

The next stage in Spring is for the Parish to complete Excel sheets that give all the details of the road speed changes required, together with speed reduction measures proposed, plus Word documents on the rationale behind this.

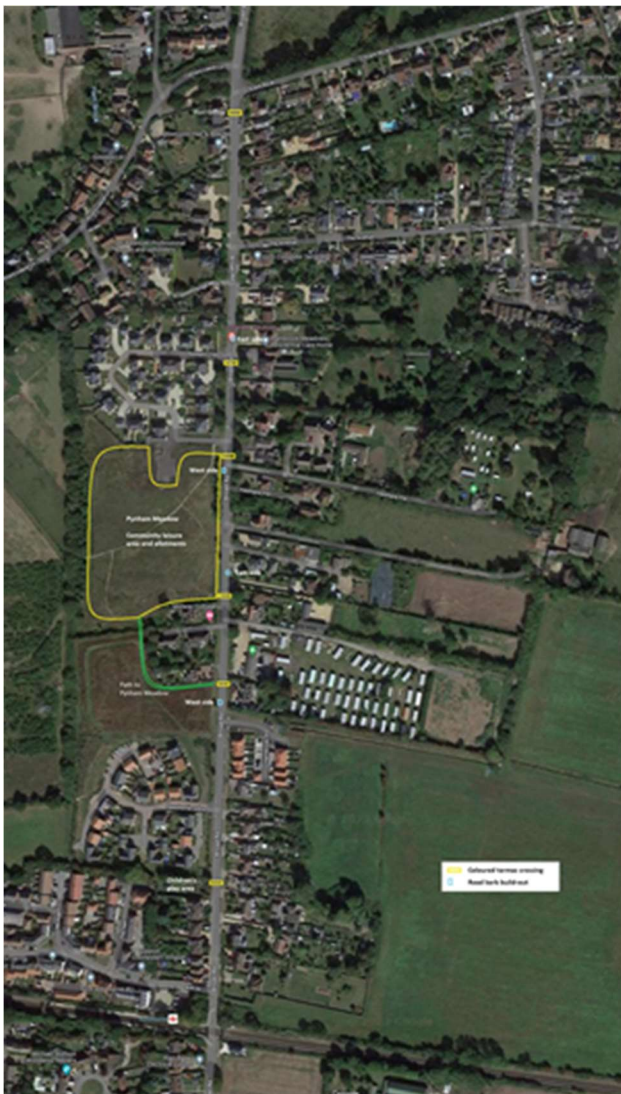
Chidham and Hambrook residents attended a recent Parish Speed Policy presentation where options for Broad Road and the Chidham peninsula were shown not residents, with discussion and debate around their pros and cons.

The consultation of Broad Road residents has given useful resident input that should improve the proposals put forward and these are being collated and summarised for discussion with WSCC Officers to ensure they have no key issues before submission for a WSCC Community Highways Scheme online by the end of July deadline.

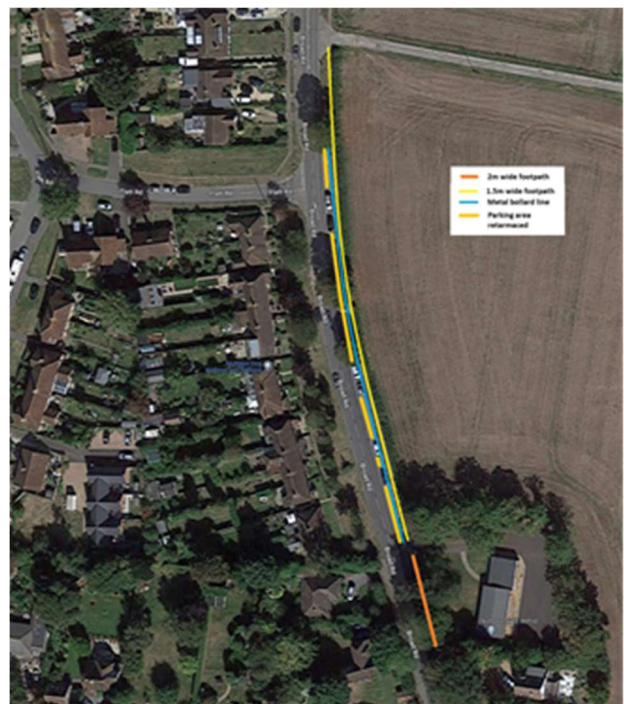
There is also the option for consideration of adding S106 and / or CIL monies to support any of the proposed road safety improvements on Broad Road.

Further Chidham peninsula area speed proposals will follow in Spring and also review of A259 speed limits that will form part of the overall review for the ChEmRoute cycle route by WSCC, contractor WSP and National Highways.

Map of Broad Road and proposed additions and their locations that are undergoing resident research



- Six coloured tarmac pathways created across Broad Road
- Pathways across the road at existing dropped kerb locations
- 4 roadside kerb buildouts to slow traffic to 30 mph limit with 2 on the East side and 2 on the West side of Broad Road
- Widen the current footpath to 1.5m down to St Wilfrid's hall
- Tarmac the current Broad Meadow parking area
- Clear vegetation from all current footpaths
- Add bollards next to footpath to protect pedestrians S of St. Wilfrid's church hall to first house: tarmac footpath 2m wide



Mike Dare will attend the Parish to review the plans for Broad Road on 7th June with Andrew and Jane

Bourne Community Bus 2023 / 24 Parish and other funding

The Bourne Bus has been running successfully since June 2022 and has offered FREE passenger journeys to all local residents of Chidham, Hambrook, Nutbourne Southbourne, Hermitage, Westbourne, Emsworth and Thorney Island.

- 20 stops with FREE local travel for all Bourne area residents in five villages
- Tuesday Thursday & Friday 8:30 am to 16:00 each day
- Bourne Bus launches June under Southbourne Community Land Trust
- Mobile friendly website with timetables and routes: www.bournebus.co.uk
- Mercedes 16 seater minibuses run 128 days and carried over 2,500 residents
- 17 volunteer drivers trained to drive the bus and handle the disabled lift
- 15,000 timetable leaflets printed for residents July and December 2023
- Promotion of the free bus via local press, PR, Parishes and marketing

In September we added a second bus, with 26 local resident hire bookings at affordable rates, and this second bus has commitments for £2,000 towards the operation of both buses that are run and managed by Southbourne CLT.

Results to date:

- Every one of 20 bus stops has been used to date but some more than others
- 10 to 15 passengers each day average, showing the buses' value to Parishes
- Strong growth since February with a peak of 20 passengers Friday 24th March
- The second bus covered two thirds of its £400 month costs via local hire rental
- More people travelling to Havant and Emsworth, fewer to Chichester (less shops)
- Full funding obtained to run the bus 2022 / 23 (£20k grants, £7k parishes)
- Other grants are also being applied for on an ongoing basis for 2023 onwards
- **Both buses cost £38,000 to run which comes via grants, funds and Parishes**

Whilst we were able to secure £30,000 for the setting up and first year of operation of the bus, we are aware that it is more difficult to secure funds for ongoing operational costs than it is for setting up new resident services. We have completed a full financial review of the options for funding for the Bourne Community Bus for 2023, with 4 possible options. These will be discussed at the May 16 Southbourne CLT meeting, with results given to Parishes in June.

We are currently reviewing sources of grants and funding outside of Parish contributions and these include:

- National Lottery (grant of £10,000 was received for launch in June 2022)
- WSCC Forum for Accessible Transport (grant of £10,000 for 2022 and £2,500 received for 2023)
- Tesco Community Fund (£1,000 received for 2023/24)
- UK Shared Prosperity Fund (application for £4,500 TBC via CDC)
- Military sources: AFCF, RAF benevolent Fund, Lived Experience Fund, Royal Artillery Association, SAAFA
- CDC and other Council funds
- Sussex Community Foundation
- SSEN Resilient Communities Fund
- Motability Transport Grant
- Garfield Weston Foundation
- The Robertson Trust
- Department For transport Bus Operators Grant (fuel cost recovery)
- Motability Community Transport Grants
- TNL Community Fund
- Aviva Community Fund
- Joint bids with Community Transport Sussex and Hampshire and IoW Community Transport

As Parishes are now in the process of reviewing 2023/24 budgets it is important to note that the free Bourne Bus costs almost £30,000 to run, and this money comes from Parishes and other third party grants and funding.

Funding for 2023/24 from the parish has now been agreed to be paid to the SCLT.

Bourne Heritage Trail project

The Parish has identified 15 sites suitable for the Bourne Trail website, designed to help residents and tourists find out more about the area with their mobile, as well as encouraging exercise by following sites along the trail. The trail will feature signs with QR codes and NFC tags which, when scanned by a mobile, lead to individual website pages.

The website and 12 web pages have been designed and are complete and signs for sites have also been designed by Get Consultants >

1. Chidham and Hambrook Trail main page (text to review)
2. Chidham Village Hall
3. Christmas Cottage
4. Catchpond
5. Drift Lane
6. Nutbourne Watercress
7. St Mary's Church
8. Chidmere House
9. Middleton House
10. Poor Cottage
11. Wadeway Cottage
12. Honor Wayte



Chidham Trail
Bringing local history to life

Chidham Village Hall

Chidham Village Hall was originally built as a 'floor-malting' malthouse for the production of local beer. It was part of a much larger complex which included a well, pump house, granary and cottage.

Web: bit.ly/chidhall

See other heritage and history points of interest across Bourne villages and towns on this trail plus videos, maps and more.

www.bournetrail.co.uk

Emsworth | Hermitage | Westbourne | Thornham
Southbourne | Nutbourne | Chidham | Hambrook

Chidham & Hambrook trail web pages still to do:

- Manor House (owner permission required)
- Old House at Home (permission required)
- Barleycorn (permission required)
- The Meadows (Parish to write text)
- The Ham Brook (decision on whether to include this)

QR code signs have been designed and are being printed in June (2 copies of each sign in UPVC with UV inks 25 x 8cm)

These small weatherproof signs will highlight the history and heritage all around Bourne villages, with links to local buildings, tourist sites, local people, museums, industrial heritage and wildlife sites etc. Along with an individual QR code they will also have an NFC Tag on the back of each sign that uses smartphone built-in NFC scanning (works like scan and pay) to link direct to each web page.

The signs can be screwed onto 4 inch oak or recycled plastic pavement posts (like the [WSSC Glasdon ones](#)) or screwed on walls.

As part of Stage 2 of this project from July we will produce larger interpretation boards with a trail map and details of each heritage trail, plus posters with multiple QR codes.

The aim is that external funding will be sought for Stage 2 so that all Parishes will also be able to increase their number of signs and web pages, as well as be able to take advantage of larger interpretation boards.

Note on Bourne Trail project management: this project was originally conceived by the Emsworth residents Forum but is now running as a standalone project being run by a team headed by Chair Mark Ringwood with Parish representative involvement. In the next month it will be developed as a separate Community Interest Company called InYourArea with its own bank account, funding, Trustees, scope of operation and business plan, which will enable it to focus on a much wider range of community interest, tourism and business projects. As an expert on mobile interpretation, websites and QR codes, whilst I am contracted to build the website I will not be a Trustee.



Chidham Trail
Bringing local history to life

Chidham Village Hall

Web: bit.ly/chidhall

Almost hidden on the corner of Chidham Lane and Main Road is Christmas Cottage. Previously known as Arched Cottage this architectural gem is a Grade II listed building dating from the early 1700s.

www.bournetrail.co.uk

See other heritage and history points of interest across Bourne villages and towns on this trail plus videos, maps and more.

Emsworth | Hermitage | Westbourne | Thornham
Southbourne | Nutbourne | Chidham | Hambrook