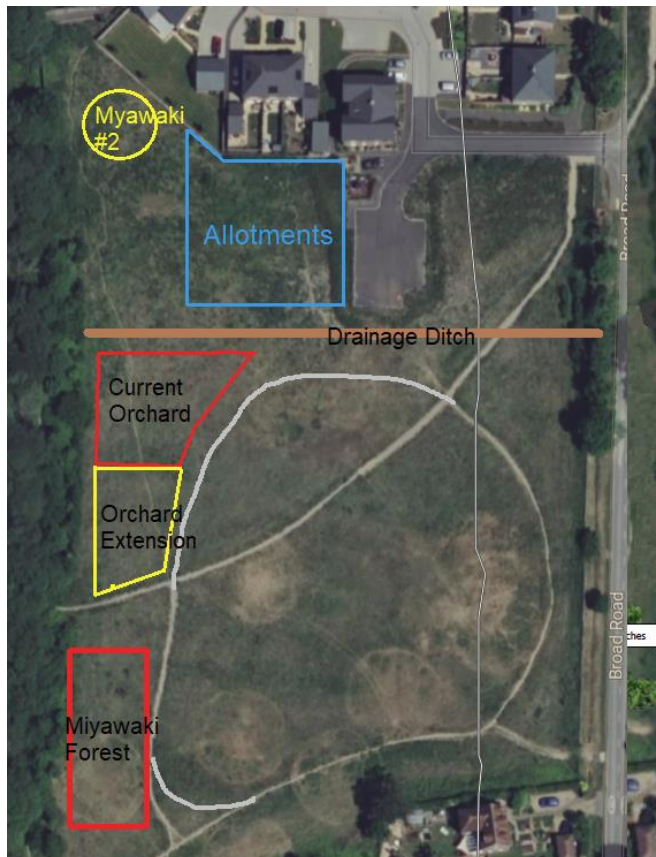


Public Open Spaces Committee

Update re Extension to Community Orchard and Second Miyawaki Forest Installation at Pynham Meadow

The council has an offer from CDC to fund an extension to the community orchard and a second Miyawaki forest installation both at Pynham Meadow.

Below image (not to scale) shows the locations. POSAC supports this.



The Miyawaki installation is fully funded and delivered by CDC.

Orchard extension – planting is not covered by CDC – we can either attempt a community exercise or fund someone to do the planting. All other costs will be on our grant application.

Proposal to vote on.

CHPC agrees to progress the Pynham Meadow orchard extension and second Miyawaki forest installation using CDC grants.

Peter Bolton

January 29th, 2024